

# UP SuperServer SYS-510T-MR

1U UP mainstream with 4 hot-swap 3.5" drive bays and redundant power supplies



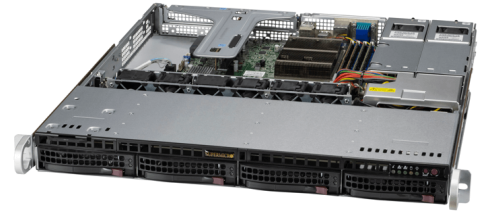
More details here

## Key Applications

Virtualization, Small Business, Encoding Decoding,

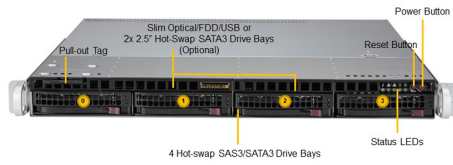
## Key Features

- Single Socket H5 (LGA-1200) supports Intel® Xeon® E-2300 series, Intel® Pentium® processors;
- 4 DIMMs; Up to 128GB of DDR4 ECC UDIMM memory with speeds of up to 3200MHz;
- 1 PCIe 4.0 x16 or 2 PCIe 4.0 x8 (FHHL); 1 Dedicated Internal HBA slot;
- Intel® Ethernet Controller i210 2x 1GbE RJ45;
- Redundant Platinum 400W Power Supply;



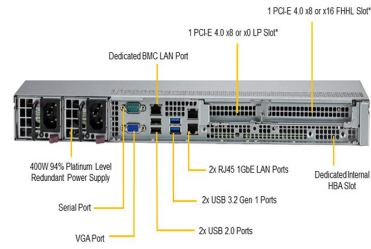
<b>Form Factor</b>	1U Rackmount Enclosure: 437 x 43 x 507mm (17.2" x 1.7" x 19.98") Package: 609.6 x 215.9 x 749.3mm (24" x 8.5" x 29.5")
<b>Processor</b>	Single Socket H5 (LGA-1200) Intel® Xeon® E-2300 series Processors and 10th Gen. Pentium® Processors Up to 8C/16T; Up to 16MB Cache
<b>GPU</b>	Max GPU Count: Up to 1 single-width GPU(s) Supported GPU: NVIDIA PCIe: T400, T1000 CPU-GPU Interconnect: PCIe 4.0 x16 CPU-to-GPU Interconnect
<b>System Memory</b>	Slot Count: 4 DIMM slots Max Memory (2DPC): Up to 128GB 3200MT/s ECC DDR4 UDIMM
<b>Drive Bays Configuration</b>	Default: Total 4 bay(s) <ul style="list-style-type: none"> <li>• 4 front hot-swap 3.5" SATA drive bay(s)</li> </ul> M.2: 1 M.2 NVMe slot(s) (M-key 2280/22110) Peripheral Bays: 2 2.5" bay(s)
<b>Expansion Slots</b>	Default <ul style="list-style-type: none"> <li>• 1 PCIe 4.0 x8 FHHL slot(s)</li> <li>• 1 PCIe 4.0 x8 LP slot(s)</li> </ul> Option A <ul style="list-style-type: none"> <li>• 1 PCIe 4.0 x16 FHHL slot(s)</li> </ul>
<b>On-Board Devices</b>	SATA: SATA (6Gbps) ; RAID 0/1/5/10 support Chipset: Intel® C256 Network Connectivity: 2 RJ45 1GbE with Intel® I210
<b>Input / Output</b>	LAN: 2 RJ45 1 GbE LAN port(s) 1 RJ45 1 GbE Dedicated IPMI LAN port(s) (IPMI shared on LAN port 1) USB: 4 USB 2.0 port(s) (header) 2 USB 3.2 Gen1 Type-A port(s) (rear) 2 USB 2.0 Type-A port(s) (rear) 2 USB 3.2 Gen1 port(s) (Header) 1 USB 3.2 Gen1 Type-A port(s) (Header) Video: 1 VGA port(s) Serial: 1 COM port(s) (Rear) 1 COM port(s) (Header) DOM: 2 SuperDOM (Disk on Module) port(s) with built-in power TPM: 1 TPM header

(Front View – System)



Drive Bay	Description
0 - 3	4x 3.5" Hot-swap SAS3/SATA3 Drive Bays

(Rear View – System)



\* Platinum CPUs provide PCIe 3.0 only

System Cooling	Fans: 4 middle cooling PWM 40x40x28mm Fan(s) 2 AOC cooling Fan(s) (optional)
Power Supply	2x 400W Redundant (1 + 1) Platinum Level (94%) power supplies
System BIOS	BIOS Type: AMI 32MB SPI Flash EEPROM
Management	SuperCloud Composer; Supermicro Server Manager (SSM); Supermicro Update Manager (SUM); Supermicro SuperDoctor® 5 (SD5); Super Diagnostics Offline (SDO); Supermicro Thin-Agent Service (TAS); SuperServer Automation Assistant (SAA) New!
PC Health Monitoring	CPU: Monitors for CPU Cores, Chipset Voltages, Memory 6 + 2 + 1 Phase-switching voltage regulator FAN: Fans with tachometer monitoring Status monitor for speed control Pulse Width Modulated (PWM) fan connectors Temperature: Monitoring for CPU and chassis environment Thermal Control for fan connectors
Dimensions and Weight	Weight: Gross Weight: 30.4 lbs (13.8 kg) Net Weight: 17.6 lbs (8 kg) Available Color: Black
Operating Environment	Operating Temperature: 10°C ~ 35°C (50°F ~ 95°F) Non-operating Temperature: -40°C to 70°C (-40°F to 158°F) Operating Relative Humidity: 8% to 90% (non-condensing) Non-operating Relative Humidity: 5% to 95% (non-condensing)
Motherboard	<a href="#"><u>Super X12STH-SYS</u></a>
Chassis	CSE-813MF2TS-R407RCBP